

NET IMPACT 



Start a
NET IMPACT
CHAPTER

Turn your passions
into a **lifetime of**
world-changing action
through Net Impact
Chapters



Seth Goldman

President and CEO,
Honest Tea - Net Impact Member.



Net Impact is the global community of **emerging leaders** who take on social challenges, protect the environment, invent new products and orient business **for the greater good.**

Net Impact started in 1993 as a small network of MBA students who wanted to make a difference. Today, Net Impact is an entirely interdisciplinary network of students and professionals across the globe driving impact on campuses, throughout their careers and in their local communities.

Chapters are locally organized and focused on the interests of their community with both Chapter-led initiatives and exclusive Net Impact programming. They host events and programs designed to promote leadership, career advancement, knowledge sharing, connections and impact at the local, national and global levels.



Gain
**extraordinary
experiences**
for a lifetime
of impact

- **Leadership training** and transferable project management skills
 - **Specialized programming** only available to the Net Impact community
 - Access to influencers and events in the social, environmental and economic impact areas through an **unparalleled interdisciplinary and global network**
 - Exclusive internships and **career opportunities**
 - **Direct support and resources** from dedicated staff at Net Impact
- 



With over **350 Chapters** in more than 50 countries, and always growing, now is the time to join the movement and **become a Net Impact Chapter Leader**.

Joining the Net Impact movement is simple:

1. Submit a Chapter application: www.netimpact.org/chapter-application
2. Form a leadership team of at least two members (and Chapter advisor if student Chapter)

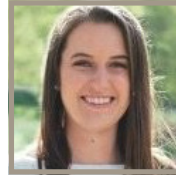
It's that easy! We will contact you with a Chapter affiliation agreement and help you with next steps to ensure your Chapter is set up for success.

Hear from the Net Impact community



Rob Kaplan

Co-Founder, Closed Loop Fund; Net Impact Chapter Leader, Haas School of Business at UC Berkeley

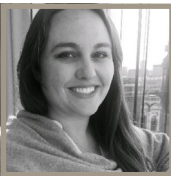


Kate Hayes

Director, Echoing Green; Net Impact Chapter Member, New York City —Professional

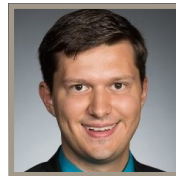
“ I developed leadership skills and gained access to an incredible network of like-minded individuals. The robust forum of connecting with them has given me the knowledge and confidence I need to be successful in my job. ”

“ Net Impact provided the opportunity to connect with peers across various industries, learn new tools to bring back to the office, and feel inspired to continue to do the work we are all doing. ”



Katie Ambrose

Employer Brand Manager, Unilever; Net Impact Partner



James M. Hood

EDF Climate Corps Fellow, Boston Housing Authority; Net Impact Chapter Leader, W.P. Carey School of Business at ASU

“ Net Impact was an invaluable partnership for Unilever. The students are incredibly aligned with our Sustainable Living Plan. We were able to source great talent into some of our open positions, as well as educate what we hope are our future candidates about our company and its purpose. ”

“ Net Impact reinvigorated me with passion and purpose and with the clear vision that business CAN be a force for good. Plus, their conference is lightyears ahead of other MBA job fairs in terms of networking value for someone pursuing a career in sustainability. ”

Check out some of our exclusive programming

Net Impact teams pitched Unilever Sustainability Executives ideas for reaching digital consumers during the UniGame Solution Sprint



Net Impact Chapter members submitted solutions and competed to win internships with Toyota during the Toyota Mobility Challenge



The Best Grapes are Green Sustainability Case Competition from Kendall-Jackson. Net Impact teams pitched their recommendations on how Kendall-Jackson can connect their sustainability commitments to consumers in-store



Net Impact Fellowships elevate leadership skills through real-world action projects in the areas of Racial Equity, Food Health and Security, Technology and Climate



350+
Chapters World Wide



2,000
Events & Programs
Annually

50+
Countries
Represented



GET STARTED TODAY!

Contact the Chapters Team to learn more about starting a Chapter at chapters@netimpact.org or call us at **415-495-4230**