



PG&E's Solar Choice Program



Together, Building
a Better California



Agenda

Introduction into Community Renewables

Solar Choice Overview & Background

Projects

Benefits

Customer Eligibility

Pricing & Rates

Customer Enrollment

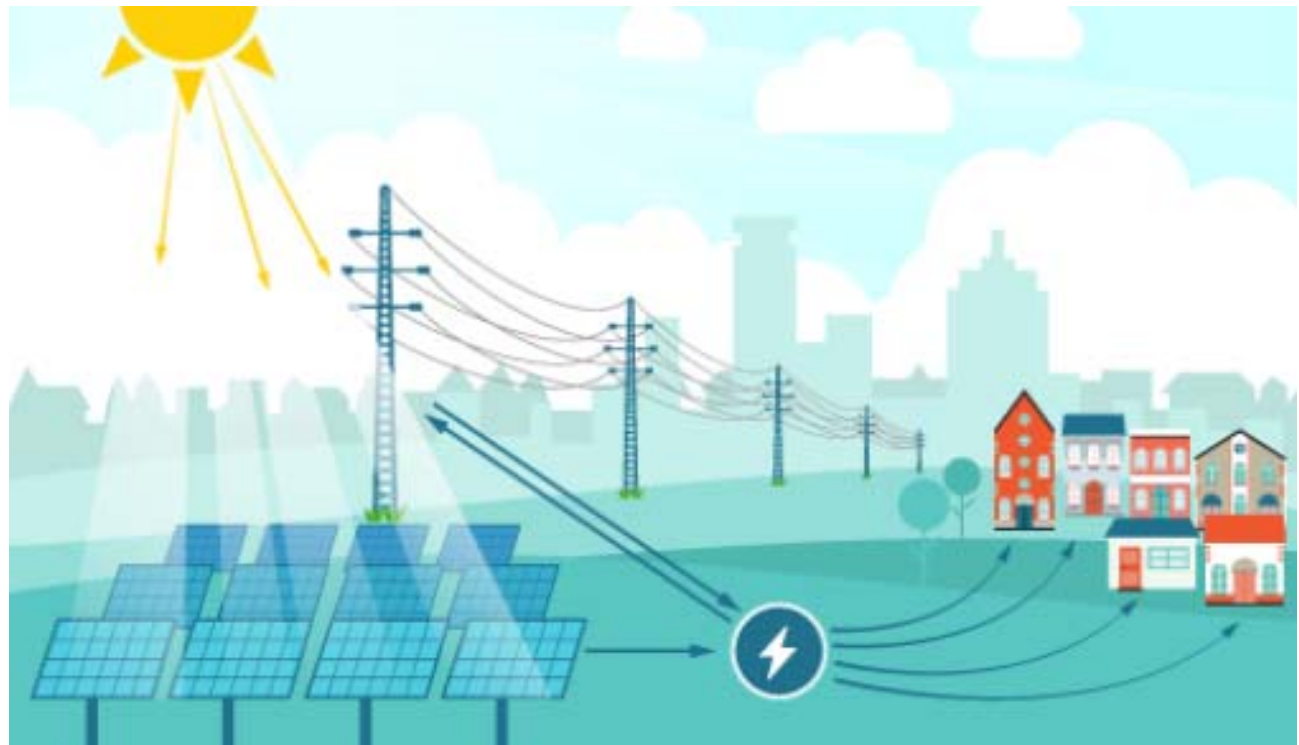


Community Renewable Program Options

PG&E electric customers have two options for 100% renewables:

**PG&E's
Solar
Choice**

**Regional
Renewable
Choice**





Community Renewables Programs Overview



A simple way to purchase 100% solar with no contract, no commitment, and no roof	Concept Energy Source Project Size Project Location Customer Purchase Transaction	A way for multiple subscribers – residential and business – to share the output of a single project
Pool of Solar Projects		Single Renewable Project
.5 to 20 MW		.5 to 20 MW
PG&E Service Area		PG&E Service Area
50 or 100% of usage		kWh production of customer's subscribed portion of the project
PG&E Bill		Customer-Developer Agreement, PG&E Bill



Overview

Growing the solar movement



PG&E's Solar Choice Program is a community solar program that provides the option for 100% or 50% solar power to all residential and business electric customers. Customers purchase their electric power from solar energy sourced in PG&E's service territory.



Background: Size, Caps, and Certification

First-Come First-Served

- 272 MW program cap, covering both programs
- 45 MW reserved for residential customers
- 45 MW reserved for procurement in disadvantaged communities (“Environmental Justice reservation”)
- Cap of 2 MW per customer service agreement

227 MW
Unspecified

45 MW
Residential

Independent Certification

- Both programs are **Green-e Energy** certified, the nation’s leading voluntary certification program for renewable energy
- Consumer protection standard







Project Map

**Project Size:
.5 MW to 20 MW**



Map Keys

-  PG&E's Solar Choice project - Under Development
-  PG&E's Solar Choice project - Delivering Energy



Why do this?

Benefits of Solar Choice

- Allows *all* customers, including renters and those who can't or don't want to install rooftop solar, the option of renewable electricity
- Participants can meet their sustainability goals and demonstrate environmental leadership as PG&E ensures that additional, new solar projects are developed for the Solar Choice customers
- Flexible - No minimum contract term or cancellation fee
- Easy - Immediate access to solar power without installation of solar panels and no solar true-up bill
- Optimal siting - can be local or distant to customer
- Economies of scale in project size
- Portable – subscription can move with the customer





Who can do this?

Eligibility & Terms

- Any PG&E customer can participate
 - Exceptions: Customers on TBS, Schedule S, NEM, non-metered service*
- Max. of 2MW solar equivalent **per meter** (~5,400 MWh annually)
 - Governments and Schools/ Universities are exempt from MW cap
- Enroll any number of meters
- Participation level (50 or 100%) can vary between meters
- No contract required – enroll for any number of months
- No cancellation fee

* TBS - Transitional Bundled Service under electric Rule 22.1,

* Schedule S – where the customers demand is regularly served by a non-PG&E supply



Solar Choice Pricing

- Customers may enroll for 50% or 100% of their electric usage and remain on their regular rate schedule.
- The Solar Choice premium is paid in addition to regular electricity charges per enrolled kWh every month

Component	2018 Pricing (per kWh)	Basis
Solar Charge	~ 6.5 cents	Weighted average price of delivering solar resources, from 0.5 to 20 MW
Program Charge	~ 1.8 cent	CPUC-mandated charges to ensure non-participants are held indifferent ¹
Power Charge Indifferent Adjustment	~1.7 - 3 cents	PCIA is set to ensure stranded generation costs are not shifted to non-participating customers
Generation Credit	(~8 - 11 cents)	Avoided costs of PG&E's standard generation (based on class average generation rate)
Net 2018 Cost	~.04 - 2 cents²	Incremental Cost per kWh

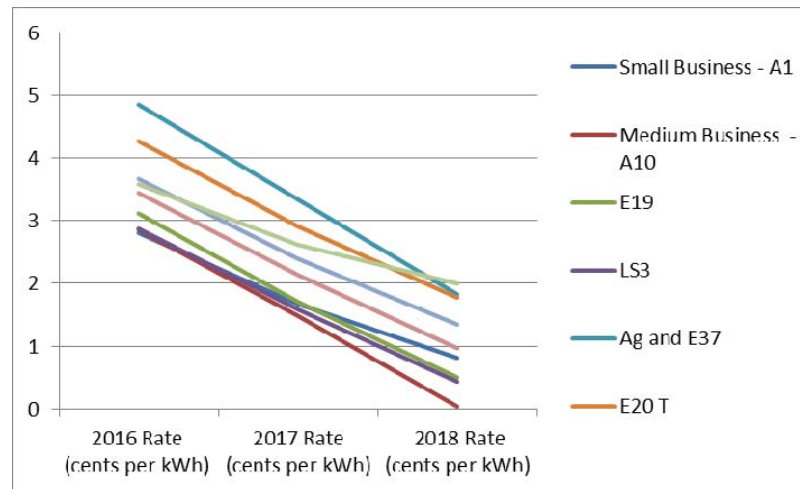
¹ Resource Adequacy, Marketing, Admin, CAISO and WREGIS fees, less solar value adjustments.

² Varies by customer class. Rates must be approved by CPUC and will change over time.



Historical Solar Choice Rates

Rate Schedule	2016 Rate (cents per kWh)	2017 Rate (cents per kWh)	2018 Rate (cents per kWh)	% Decrease 2017-2018	% Decrease Program Start to Date
Small Business - A1	2.81	1.67	0.82	51%	71%
Medium Business - A10	2.86	1.49	0.04	98%	99%
E19	3.11	1.7	0.50	71%	84%
LS3	2.88	1.59	0.43	73%	85%
Ag and E37	4.85	3.34	1.83	45%	62%
E20 T	4.26	2.91	1.77	39%	58%
E20 P	3.67	2.39	1.34	44%	63%
E20 S	3.45	2.13	0.98	54%	72%
Residential	3.58	2.61	2.00	23%	44%





Exemplary Customer Costs

Small Business*

- Average monthly usage: 2,800 kWh
- Average monthly utility bill: \$570

Solar Choice premium: \$22.96 (4%)

* Rate schedules: A1 and A6

Medium Business Business**

- Average monthly usage: 16,600 kWh
- Average monthly utility bill: \$3065

Solar Choice premium: \$6.64 (0.2%)

** Rate schedule: A10



Solar Choice Online Rate Calculator

1. TYPE OF SERVICE ▼

2. MONTHLY USAGE ▲

USAGE LEVEL*

50%

100%

MONTHLY USAGE *

 ✓

kWh ?

Estimated Residential Usage:

500 kWh average, 300 kWh low, 700 kWh high

PREVIOUS

GET RESULTS

COSTS

Estimated additional monthly cost: \$10.01

Estimated premium: 2 Cents/kWh

www.pge.com/solarchoice



Customer Enrollment

**Non-Residential customers have to call a PG&E
Contact Center to enroll**

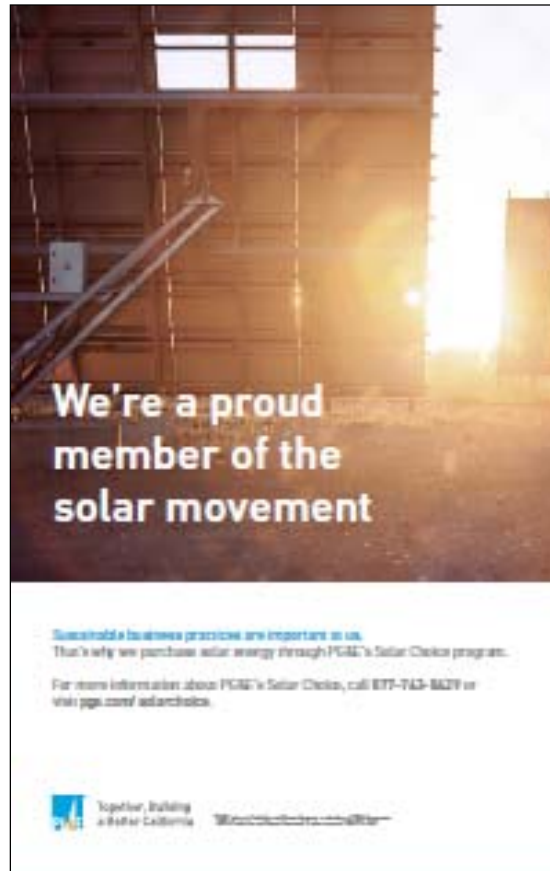
1-877-743-8429





Recognition

Participants will receive promotional marketing benefits



- Business posts
- Web tout
- Email Signature
- Sample press release
- Pay stub caption
- Window Cling
- Poster
- Certificate of participation



Thank you

Jana Kopyciok-Lande
Senior Product Manager, Solar Choice Program
Jana.kopyciok-lande@pge.com

www.pge.com/solarchoice